

## SPECIFICATIONS

### Certifications/Qualifications

|                    |  |
|--------------------|--|
| ADA Compliant      | Yes  |
| Class 2            | Yes  |
| Title 24 Compliant | Yes  |
|                    | <a href="http://www.kichler.com/warranty">www.kichler.com/warranty</a> |

### Dimensions

|   |                |
|---|----------------|
| Base Backplate                                  | 17.50" X 4.75" |
| Extension                                       | 3.50"          |
| Weight  | 5.59 LBS       |
| Height from center of Wall opening (Spec Sheet) | 2.75"          |
| Height  | 5.50"          |
| Length  | 18.25"         |
| Width   | 18.25"         |

### Electrical

|               |              |
|---------------|--------------|
| Input Voltage | Single(120)V |
|---------------|--------------|

### Light Source

|                            |   |
|----------------------------|---|
| Delivered Lumens           | 900   |
| Dimmable                   | Yes   |
| Dimmable Notes             | This LED is compatible with most standard incandescent dimmers, LED dimmers, and electronic low voltage dimmers. For more information, go to <a href="http://Kichler.com/dimming">Kichler.com/dimming</a> . |
| Expected Life Span (Hours) | 40000   |
| Lamp Included              | Integrated  |
| Light Source               | LED   |
| Max or Nominal Watt        | 20.00   |
| # of Bulbs/LED Modules     | 1   |

### Mounting/Installation

|                              |            |
|------------------------------|------------|
| Interior/Exterior            | Interior   |
| Lead Wire Length             | 6"         |
| Location Rating              | Damp       |
| Mounting Style               | Wall Mount |
| Mounting Weight              | 7.25 LBS   |
| Mount Vertical Or Horizontal | Yes        |

### Photometrics

|                         |       |
|-------------------------|-------|
| Color Rendering Index   | 90    |
| Color Temperature Range | 3000  |
| Kelvin Temperature      | 3000K |

## FIXTURE ATTRIBUTES

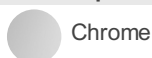
### Housing

|                      |                        |
|----------------------|------------------------|
| Diffuser Description | Clear Satin Etched     |
| Primary Material     | GLASS                  |
| Shade Dimensions     | 18.25" X 5.50" X 2.00" |

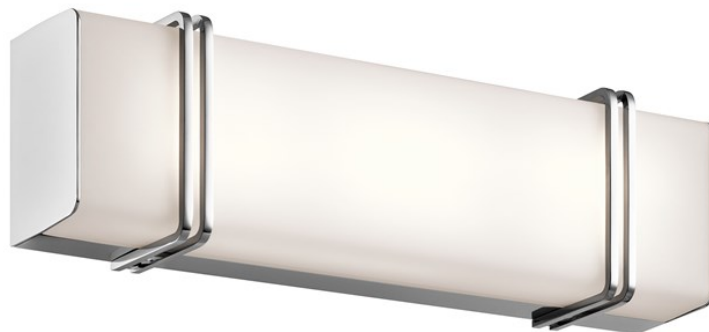
### Product/Ordering Information

|        |              |
|--------|--------------|
| SKU    | 45801CHLED   |
| Finish | Chrome       |
| Style  | Contemporary |
| UPC    | 783927453233 |

### Finish Options



Chrome



## ALSO IN THIS FAMILY



45838CHLED



45838OZLED



45839CHLED



45839OZLED