

CULLEN COLLECTION

Cullen 14" 5 Light Foyer Pendant Olde Bronze®

43900OZ (Olde Bronze)

Project Name: _____
Location: _____
Type: _____
Qty: _____
Comments: _____



Certifications/Qualifications

| | |
|--|-----|
| Location Rating | Dry |
| www.kichler.com/warranty | |

Dimensions

| | |
|-------------------|----------|
| Base Backplate | 5.00 SQ |
| Chain/Stem Length | 36" |
| Weight | 8.50 LBS |
| Height | 27.00" |
| Overall Height | 65.00" |
| Width | 14.00" |

Mounting/Installation

| | |
|----------------------------|----------|
| Interior/Exterior | Interior |
| Lead Wire Length | 51 |
| Mounting Weight | 8.50 LBS |
| Slope Ceiling Kit Included | Yes |

Primary Lamping

| | |
|------------------------|--------------|
| Bulb Product ID | 4064CLR |
| Lamp Included | Not Included |
| Lamp Type | B |
| Light Source | Incandescent |
| Max or Nominal Watt | 60W |
| # of Bulbs/LED Modules | 5 |
| Socket Type | CAND |
| Socket Wire | 105 |

Product/Ordering Information

| | |
|--------|--------------|
| SKU | 43900OZ |
| Finish | Bronze |
| Style | Contemporary |
| UPC | 783927474092 |

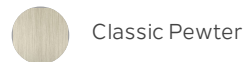
Compatible Accessories

| | |
|--|--------|
| 36" Standard Gauge Chain Olde 2996OZ Bronze® | |
| 12" Stem Olde Bronze® | 2999OZ |

Specifications

| | |
|----------|-------|
| Material | STEEL |
|----------|-------|

Additional Finishes



Classic Pewter

Kichler

7711 East Pleasant Valley Road Cleveland, Ohio 44131-8010
Toll free: 866.558.5706 or kichler.com

Notes:

- 1) Information provided is subject to change without notice. All values are design or typical values when measured under laboratory conditions.
- 2) Incandescent Equivalent: The incandescent equivalent as presented is an approximate number and is for reference only.

