

KICHLER®

KICHLER PHOTOMETRIC LAB

Filename: RLM - SC12 Shade 200W - Photometric Report

Manufacturer: Kichler Lighting LLC

Luminaire: SC12 - 12" Shallow Classic Shade

Luminaire Cat: CTR180916-09

Lamp: 200W A21

Lamp Output: 1 lamp, rated Lumens/lamp: 3780

Max Candela: 1,182.3 at Horizontal: 60°, Vertical: 4°

Input Wattage: 204.6

Luminous Opening: Circular (Dia: 12")

Test: LM-79 Distribution

Test Lab: Kichler Lighting LLC

Photometry : Type C

Roadway Summary

Cutoff Classification:	NONCUTOFF
Distribution:	TYPE II, VERY SHORT
Max Cd, 90 Deg Vert:	389.3
Max Cd, 80 to <90 Deg:	472.3
Lumens % Lamp	
Downward Street Side:	1,571.0 41.6%
Downward House Side:	1,523.0 40.3%
Downward Total:	3,094.0 81.9%
Upward Street Side:	267.5 7.1%
Upward House Side:	267.2 7.1%
Upward Total:	534.7 14.1%
Total Lumens:	3,628.7 96%

Flood Summary

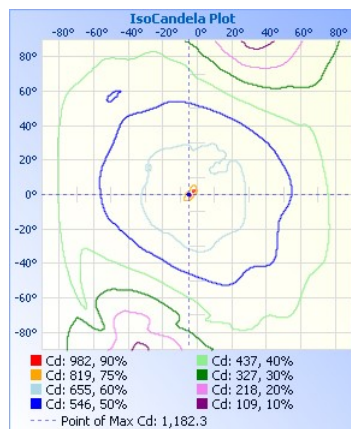
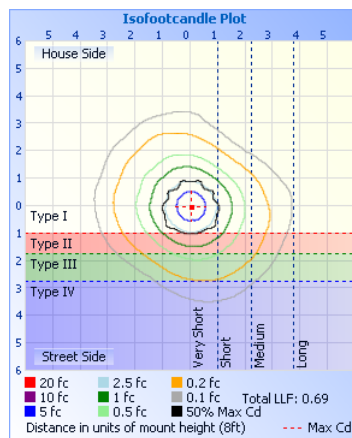
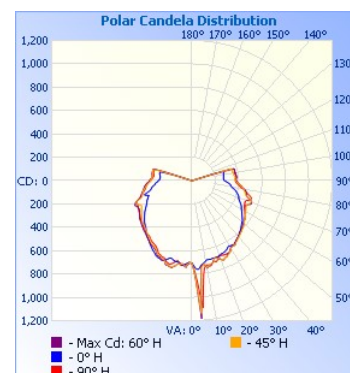
	Efficiency	Lumens	Horizontal Spread	Vertical Spread
Field (10%):	95.3%	3,604.0	n/a	215.4
Beam (50%):	39.1%	1,476.4	110.7	99.3
Total:	96.1%	3,631.4		

Zonal Lumen Summary

Zone	Lumens	% Lamp	% Luminaire
0-30	585.4	15.5%	16.1%
0-40	980.8	25.9%	27%
0-60	1,880.5	49.7%	51.8%
60-90	1,213.5	32.1%	33.4%
70-100	1,072.1	28.4%	29.5%
90-120	534.8	14.1%	14.7%
0-90	3,094.0	81.9%	85.3%
90-180	534.8	14.1%	14.7%
0-180	3,628.8	96%	100%

Lumens Per Zone

Zone	Lumens	% Total	Zone	Lumens	% Total
0-10	71.2	2.0%	90-100	305.3	8.4%
10-20	199.7	5.5%	100-110	229.2	6.3%
20-30	314.5	8.7%	110-120	0.3	0%
30-40	395.4	10.9%	120-130	0	0%
40-50	442.5	12.2%	130-140	0	0%
50-60	457.2	12.6%	140-150	0	0%
60-70	446.6	12.3%	150-160	0	0%
70-80	416.8	11.5%	160-170	0	0%
80-90	350.1	9.6%	170-180	0	0%



Illuminance at a Distance			
	Center Beam fc	Beam Width	
1.3ft	419 fc	3.1 ft	3.8 ft
2.7ft	97.0 fc	6.4 ft	7.8 ft
4.0ft	44.2 fc	9.4 ft	11.6 ft
5.3ft	25.2 fc	12.5 ft	15.3 ft
6.7ft	15.8 fc	15.8 ft	19.4 ft
8.0ft	11.1 fc	18.8 ft	23.1 ft
Vert. Spread: 99.3°			
Horiz. Spread: 110.7°			



Coefficients Of Utilization - Zonal Cavity Method

Effective Floor Cavity Reflectance: 20%

RCC %:	80				70				50				30				10				0
RW %:	70	50	30	0	70	50	30	0	50	30	20	10	50	30	20	10	50	30	20	10	0
RCR: 0	1.11	1.11	1.11	1.11	1.07	1.07	1.07	.82	.99	.99	.99	.92	.92	.92	.85	.85	.85	.85	.85	.85	.82
1	.97	.91	.85	.80	.93	.87	.82	.61	.80	.76	.72	.74	.71	.68	.68	.66	.63	.60	.58	.54	.50
2	.87	.77	.69	.62	.83	.74	.67	.48	.68	.62	.57	.63	.58	.53	.58	.54	.50	.47	.44	.40	.36
3	.78	.66	.57	.50	.74	.64	.55	.40	.59	.52	.46	.54	.48	.43	.50	.45	.41	.38	.35	.31	.27
4	.71	.58	.49	.41	.68	.56	.47	.33	.52	.44	.38	.48	.41	.36	.44	.39	.34	.31	.28	.24	.20
5	.65	.52	.42	.35	.62	.50	.41	.28	.46	.38	.32	.42	.36	.31	.39	.34	.29	.27	.24	.20	.16
6	.60	.46	.37	.30	.57	.44	.36	.25	.41	.34	.28	.38	.32	.27	.35	.30	.25	.23	.20	.16	.12
7	.55	.42	.33	.26	.53	.40	.32	.22	.37	.30	.25	.35	.28	.23	.32	.27	.22	.20	.16	.12	.08
8	.51	.38	.29	.23	.49	.36	.28	.19	.34	.27	.22	.32	.25	.21	.29	.24	.20	.18	.14	.10	.06
9	.48	.34	.26	.21	.46	.33	.26	.17	.31	.24	.19	.29	.23	.19	.27	.22	.18	.16	.12	.08	.04
10	.45	.32	.24	.19	.43	.31	.23	.16	.29	.22	.17	.27	.21	.17	.25	.20	.16	.14	.10	.06	.02

Zonal Lumen Tabulation - Flood Type

	-89.75	-89.25	-88.75	-88.25	-87.5	-86.75	-86.25	-85.75	-85.25	-84.75	-84.25	-83.5	-82.5	-81.5	-80.5	-78.75	-76.25	-73.75	-71.25	-68.75	-66.25	-63.75	-61.25	-58.75	-56.25	-53.75	-51.25	-48.75	-46.25	-43.7
177.5	0	0	0	0	0	0	0	0	0	0	0	0.1	0.1	0.1	0.1	0.3	0.3	0.3	0.1	0	0	0	0	0	0	0	0	0	0	0
170	0	0	0	0	0	0	0	0	0	0.1	0.1	0.1	0.2	0.2	0.2	0.6	0.7	0.6	0.2	0	0	0	0	0	0	0	0	0	0	0
160	0	0	0	0	0.1	0	0	0	0	0.1	0.1	0.1	0.2	0.2	0.2	0.6	0.7	0.7	0.4	0	0	0	0	0	0	0	0	0	0	0
150	0	0	0	0	0.1	0	0	0	0	0.1	0.1	0.1	0.2	0.2	0.2	0.6	0.7	0.8	0.7	0.3	0	0	0	0	0	0	0	0	0	0
141.25	0	0	0	0	0	0	0	0	0	0	0	0.1	0.1	0.1	0.1	0.4	0.5	0.6	0.7	0.5	0.2	0	0	0	0	0	0	0	0	0
135	0	0	0	0	0	0	0	0	0	0	0	0.1	0.1	0.1	0.1	0.3	0.4	0.4	0.5	0.5	0.4	0.1	0	0	0	0	0	0	0	0
130	0	0	0	0	0	0	0	0	0	0	0	0.1	0.1	0.1	0.1	0.3	0.4	0.4	0.5	0.5	0.5	0.4	0.2	0	0	0	0	0	0	0
125.25	0	0	0	0	0	0	0	0	0	0	0	0.1	0.1	0.1	0.1	0.3	0.3	0.4	0.4	0.5	0.5	0.5	0.5	0.3	0.2	0	0	0	0	0
121	0	0	0	0	0	0	0	0	0	0	0	0.1	0.1	0.1	0.1	0.2	0.3	0.3	0.4	0.4	0.4	0.5	0.5	0.6	0.5	0.3	0.2	0	0	0
115.75	0	0	0	0	0	0	0	0	0	0	0	0.1	0.1	0.1	0.1	0.4	0.5	0.5	0.6	0.7	0.7	0.8	0.9	1	1	1	0.9	0.6	0.6	0
111	0	0	0	0	0	0	0	0	0	0	0	0	0	0.1	0.1	0.2	0.2	0.2	0.3	0.3	0.3	0.4	0.4	0.4	0.5	0.5	0.5	0.6	0.6	0
108.25	0	0	0	0	0	0	0	0	0	0	0	0	0	0	0	0.1	0.2	0.2	0.2	0.3	0.3	0.3	0.3	0.4	0.4	0.4	0.4	0.5	0.5	0
106	0	0	0	0	0	0	0	0	0	0	0	0	0	0	0	0.1	0.1	0.2	0.2	0.2	0.2	0.2	0.2	0.3	0.3	0.3	0.3	0.4	0.4	0
104	0	0	0	0	0	0	0	0	0	0	0	0	0	0	0	0.1	0.1	0.2	0.2	0.2	0.2	0.2	0.2	0.3	0.3	0.3	0.3	0.4	0.4	0
102	0	0	0	0	0	0	0	0	0	0	0	0	0	0	0	0.1	0.1	0.2	0.2	0.2	0.2	0.2	0.3	0.3	0.3	0.3	0.4	0.4	0.4	0
100	0	0	0	0	0	0	0	0	0	0	0	0	0	0	0	0.1	0.1	0.2	0.2	0.2	0.2	0.2	0.3	0.3	0.3	0.3	0.4	0.4	0.4	0
98.5	0	0	0	0	0	0	0	0	0	0	0	0	0	0	0	0.1	0.1	0.1	0.1	0.1	0.1	0.1	0.1	0.2	0.2	0.2	0.2	0.2	0.2	0
97.5	0	0	0	0	0	0	0	0	0	0	0	0	0	0	0	0.1	0.1	0.1	0.1	0.1	0.1	0.1	0.1	0.2	0.2	0.2	0.2	0.2	0.2	0
96.5	0	0	0	0	0	0	0	0	0	0	0	0	0	0	0.1	0.1	0.1	0.1	0.1	0.1	0.1	0.1	0.1	0.2	0.2	0.2	0.2	0.2	0.2	0
95.75	0	0	0	0	0	0	0	0	0	0	0	0	0	0	0	0	0	0	0	0	0	0.1	0.1	0.1	0.1	0.1	0.1	0.1	0.1	0
95.25	0	0	0	0	0	0	0	0	0	0	0	0	0	0	0	0	0	0	0	0	0.1	0.1	0.1	0.1	0.1	0.1	0.1	0.1	0.1	0
94.75	0	0	0	0	0	0	0	0	0	0	0	0	0	0	0	0	0	0	0	0	0.1	0.1	0.1	0.1	0.1	0.1	0.1	0.1	0.1	0
94.25	0	0	0	0	0	0	0	0	0	0	0	0	0	0	0	0	0	0	0	0	0.1	0.1	0.1	0.1	0.1	0.1	0.1	0.1	0.1	0
93.75	0	0	0	0	0	0	0	0	0	0	0	0	0	0	0	0	0	0	0	0	0.1	0.1	0.1	0.1	0.1	0.1	0.1	0.1	0.1	0
93.25	0	0	0	0	0	0	0	0	0	0	0	0	0	0	0	0	0	0	0	0	0.1	0.1	0.1	0.1	0.1	0.1	0.1	0.1	0.1	0
92.75	0	0	0	0	0	0	0	0	0	0	0	0	0	0	0	0	0	0	0	0	0.1	0.1	0.1	0.1	0.1	0.1	0.1	0.1	0.1	0
92.25	0	0	0	0	0	0	0	0	0	0	0	0	0	0	0	0	0	0	0	0	0.1	0.1	0.1	0.1	0.1	0.1	0.1	0.1	0.1	0
91.75	0	0	0	0	0	0	0	0	0	0	0	0	0	0	0	0	0	0	0	0.1	0.1	0.1	0.1	0.1	0.1	0.1	0.1	0.1	0.1	0
91.25	0	0	0	0	0	0	0	0	0	0	0	0	0	0	0	0	0	0	0	0.1	0.1	0.1	0.1	0.1	0.1	0.1	0.1	0.1	0.1	0
90.75	0	0	0	0	0	0	0	0	0	0	0	0	0	0	0	0	0	0	0	0.1	0.1	0.1	0.1	0.1	0.1	0.1	0.1	0.1	0.1	0
90.25	0	0	0	0	0	0	0	0	0	0	0	0	0	0	0	0	0	0	0	0.1	0.1	0.1	0.1	0.1	0.1	0.1	0.1	0.1	0.1	0
89.75	0	0	0	0	0	0	0	0	0	0	0	0	0	0	0	0	0	0	0	0.1	0.1	0.1	0.1	0.1	0.1	0.1	0.1	0.1	0.1	0
89.25	0	0	0	0	0	0	0	0	0	0	0	0	0	0	0	0	0	0	0	0.1	0.1	0.1	0.1	0.1	0.1	0.1	0.1	0.1	0.1	0
88.75	0	0	0	0	0	0	0	0	0	0	0	0	0	0	0	0	0	0	0	0.1	0.1	0.1	0.1	0.1	0.1	0.1	0.1	0.1	0.1	0
88.25	0	0	0	0	0	0	0	0	0	0	0	0	0	0	0	0	0	0	0	0.1	0.1	0.1	0.1	0.1	0.1	0.1	0.1	0.1	0.1	0
87.5	0	0	0	0	0	0	0	0	0	0	0	0	0	0	0	0.1	0.1	0.1	0.1	0.1	0.1	0.1	0.1	0.1	0.2	0.2	0.2	0.2	0.2	0
86.75	0	0	0	0	0	0	0	0	0	0	0	0	0	0	0	0	0	0	0	0.1	0.1	0.1	0.1	0.1	0.1	0.1	0.1	0.1	0.1	0
86.25	0	0	0	0	0	0	0	0	0	0	0	0	0	0	0	0	0	0	0	0.1	0.1	0.1	0.1	0.1	0.1	0.1	0.1	0.1	0.1	0
85.75	0	0	0	0	0	0	0	0	0	0	0	0	0	0	0	0	0	0	0	0.1	0.1	0.1	0.1	0.1	0.1	0.1	0.1	0.1	0.1	0
85.25	0	0	0	0	0	0	0	0	0	0	0	0	0	0	0	0	0	0	0	0.1	0.1	0.1	0.1	0.1	0.1	0.1	0.1	0.1	0.1	0
84.75	0	0	0	0	0	0	0	0	0	0	0	0	0	0	0	0	0	0	0	0.1	0.1	0.1	0.1	0.1	0.1	0.1	0.1	0.1	0.1	0
84.25	0	0	0	0	0	0	0	0	0	0	0	0	0	0	0	0	0	0	0	0.1	0.1	0.1	0.1	0.1	0.1	0.1	0.1	0.1	0.1	0
83.5	0	0	0	0	0	0	0	0	0	0	0	0	0	0	0	0.1	0.1	0.1	0.1	0.1	0.1	0.1	0.1	0.1	0.2	0.2	0.2	0.2	0.2	0
82.5	0	0	0	0	0	0	0	0	0	0	0	0	0	0	0	0.1	0.1	0.1	0.1	0.1	0.1	0.1	0.1	0.1	0.2	0.2	0.2	0.2	0.2	0
81.5	0	0	0	0	0	0	0	0	0	0	0	0	0	0	0	0.1	0.1	0.1	0.1	0.1	0.1	0.1	0.1	0.1	0.2	0.2	0.2	0.2	0.2	0
80.5	0	0	0	0	0	0	0	0	0	0	0	0	0	0	0	0.1	0.1	0.1	0.1	0.1	0.1	0.1	0.1	0.1	0.2	0.2	0.2	0.2	0.2	0
78.75	0	0	0	0	0	0	0	0	0	0	0	0	0	0	0	0.1	0.2	0.2	0.2	0.3	0.3	0.3	0.4	0.4	0.5	0.5	0.5	0.6	0.6	0
76.25	0	0	0	0	0	0	0	0	0	0	0	0	0	0	0.1	0.1	0.2	0.2	0.2	0.3	0.3	0.3	0.4	0.4	0.5	0.5	0.5	0.6	0.6	0
73.75	0	0	0	0	0	0	0	0	0	0	0	0	0	0	0.1	0.1	0.2	0.2	0.2	0.3	0.3	0.3	0.4	0.4	0.4	0.5	0.5	0.6	0.6	0
71.25	0	0	0	0	0	0	0	0	0	0	0	0	0	0	0.1	0.2	0.2	0.2	0.3	0.3	0.3	0.4	0.4	0.4	0.5	0.5	0.6	0.6	0.6	0
68.75	0	0	0	0	0	0	0	0	0	0	0	0	0	0	0.1	0.2	0.2	0.2	0.3	0.3	0.3	0.4	0.4	0.4	0.5	0.5	0.6	0.6	0.6	0
66.25	0	0	0	0	0	0	0	0	0	0	0	0	0	0	0.1	0.2	0.2	0.2	0.3	0.3	0.3	0.4	0.4	0.4	0.5	0.5	0.6	0.6	0.7	0
63.75	0	0	0	0	0	0	0	0	0	0	0	0	0	0	0.1	0.2	0.2	0.2	0.3	0.3	0.3	0.4	0.4	0.4	0.5	0.5	0.6	0.6	0.7	0
61.25	0	0	0	0	0	0	0	0	0	0	0	0	0	0	0.1	0.2	0.2	0.2	0.3	0.3	0.4	0.4	0.4	0.4	0.5	0.5	0.6	0.6	0.7	0
58.75	0	0	0	0	0	0	0	0	0	0	0	0	0	0	0.1	0.2	0.2	0.2	0.3	0.3	0.3	0.4	0.4	0.4	0.5	0.5				

[illegible]

Maximum lm: 1.8
Field lm: 3,604.0
Total lm: 3,631.4

Candela Table - Type C

	0	5	10	15	20	25	30	35	40	45	50	55	60	65	70	75	80	85	90	95	100	105	110	115	120	125	130	135	140	145	150	155	160	165	170	175	180	185	190	195	200	205	210						
0	707	707	707	707	707	707	707	707	707	707	707	707	707	707	707	707	707	707	707	707	707	707	707	707	707	707	707	707	707	707	707	707	707	707	707	707	707	707	707	707	707	707	707	707	707				
1	723	727	732	737	742	746	748	752	754	757	757	758	758	760	757	751	747	746	742	738	731	726	721	716	713	711	709	708	706	708	704	704	704	703	700	702	703	703	703	703	703	703	703	703	703	703	703	703	
2	744	753	763	772	782	791	799	810	820	819	825	826	831	831	824	816	809	805	792	788	776	766	753	744	734	725	716	710	708	709	706	706	702	702	703	704	700	701	701	701	702	703	703	705	705	705	705	705	705
3	759	774	791	818	844	873	896	923	942	952	956	966	967	964	957	940	916	894	864	850	829	808	785	767	752	740	728	717	709	710	703	702	702	706	709	703	704	707	707	707	709	708	708	710	710	710	710	710	
4	760	791	834	886	939	989	1033	1086	1132	1136	1148	1168	1182	1160	1145	1132	1078	1016	971	941	902	880	848	809	769	744	734	722	712	708	703	701	703	709	713	716	713	714	716	718	722	729	729	729	729	729	729		
5	752	783	829	905	987	1023	1038	1003	953	918	882	891	898	903	919	958	996	1029	1091	1087	1033	952	887	848	805	758	734	721	712	707	700	701	706	712	716	722	720	723	728	731	736	733	733	733	733	733	733		
6	730	747	763	791	798	782	782	768	753	752	746	741	738	748	760	780	807	860	927	990	1067	1033	946	862	819	771	734	716	707	704	694	702	706	713	724	727	726	732	732	729	725	721	721	721	721	721	721		
7	721	725	723	721	729	733	734	737	736	736	732	730	728	724	728	739	754	777	818	858	905	979	950	873	810	767	731	712	703	701	693	704	706	718	724	734	732	730	723	717	713	709	713	709	713	709	713		
8	714	713	713	721	727	729	729	730	726	723	718	715	721	724	725	730	736	745	759	786	811	843	864	817	782	752	722	703	695	703	696	706	710	721	731	725	726	718	711	710	714	717	717	717	717	717	717		
9	704	708	713	717	721	721	720	723	728	734	739	740	739	739	740	740	736	735	738	743	755	763	768	746	725	732	715	704	692	701	704	709	717	726	725	716	713	708	710	715	718	721	721	721	721	721			
10	694	704	712	716	723	727	730	740	747	755	761	763	760	758	755	754	745	737	732	726	730	735	741	734	714	722	716	705	688	702	704	710	718	727	719	708	705	709	711	716	717	716	716	716	716	716	716		
11	688	697	706	713	722	733	739	743	743	743	744	746	747	748	754	768	756	748	736	730	717	717	728	731	713	707	718	706	685	697	704	712	721	725	711	708	708	710	710	710	711	711	711	711	711	711			
12	689	698	703	712	727	734	738	735	736	735	738	735	736	735	736	740	746	750	747	748	734	717	704	706	713	709	697	712	701	682	695	704	715	725	721	705	701	703	703	703	708	717	722	722	722	722			
13	691	696	706	719	728	727	724	725	725	728	734	733	731	731	734	737	738	736	741	731	714	694	690	693	699	693	701	698	684	693	706	715	723	711	703	693	699	695	703	712	724	734	734	734	734	734			
14	689	697	710	715	716	714	717	720	721	726	728	725	724	724	724	727	728	723	728	726	715	694	676	680	689	694	692	698	681	691	702	714	715	705	694	690	690	696	704	721	732	741	741	741	741	741			
15	688	698	705	709	708	713	715	716	717	718	711	709	710	712	714	715	723	721	718	712	710	700	677	674	679	681	688	697	678	687	699	716	708	698	684	688	698	714	726	741	746	746	746	746	746				
16	688	696	704	701	706	713	714	709	697	695	694	694	692	689	692	700	713	717	719	711	707	703	687	672	672	687	687	698	678	685	699	711	702	687	682	681	689	708	725	738	741	742	742	742	742				
17	689	693	699	699	707	708	700	690	688	686	688	690	685	681	675	681	697	707	723	716	704	704	688	676	668	686	688	697	676	683	696	705	695	679	675	688	699	720	733	736	740	740	740	740	740				
18	687	692	691	697	703	691	685	688	698	702	706	705	701	695	687	683	690	698	711	710	704	696	691	680	666	681	691	701	676	683	693	702	688	677	678	696	711	730	735	733	732	732	732	732	732				
19	687	683	686	694	688	673	677	686	697	706	717	715	713	705	693	691	686	682	697	703	702	694	690	684	667	673	693	699	677	684	690	699	684	678	686	707	719	731	729	726	723	720	720	720	720				
20	685	683	690	687	674	672	688	698	708	712	714	716	711	705	698	691	693	683	680	691	699	687	684	679	669	670	693	697	676	682	684	691	677	678	691	716	725	728	723	716	713	708	713	708					
21	680	683	682	672	670	682	698	711	722	730	732	734	729	723	713	702	693	690	685	680	689	692	683	684	676	663	692	697	676	678	680	683	671	683	700	721	727	723	716	711	709	708	705	701	709	708			
22	675	674	669	656	668	682	698	711	725	730	734	735	731	725	716	708	698	695	687	686	681	685	685	679	681	664	690	694	674	675	676	674	676	692	707	722	723	719	713	708	705	701	701	701	701	701			
23	674	671	660	662	672	685	703	713	717	719	719	720	719	715	710	705	699	690	691	683	681	679	679	682	682	659	689	690	669	669	671	669	681	693	710	721	720	716	711	704	701	697	697	697	697				
24	671	667	656	667	679	704	714	719	720	719	719	715	714	709	705	703	702	697	692	695	684	680	680	681	680	662	684	686	665	665	668	667	684	697	712	718	719	713	707	703	697	693	693	693	693				
25	669	658	656	669	684	701	710	710	712	717	717	718	717	713	707	703	702	702	693	695	686	673	676	681	678	667	679	682	661	663	664	667	684	698	706	714	714	710	706	700	694	688	688	688	688				
26	663	653	658	667	690	696	701	703	704	706	703	703	696	694	689	692	694	695	695	692	693	677	675	678	677	672	673	676	658	660	662	666	682	692	701	707	709	706	701	695	685	679	679	679	679				
27	659	654	662	676	688	694	698	704	701	701	701	700	696	689	686	685	689	689	692	692	691	680	671	675	672	670	667	671	655	659	660	666	677	686	694	697	700	699	692	684	677	671	671	671	671	671			
28	649	648	655	670	676	681	685	689	691	692	696	696	693	686	682	680	682	686	687	688	688	680	672	670	668	668	662	665	653	655	656	661	668	676	684	687	691	690	686	678	669	657	657	657	657				
29	643	646	655	660	663	666	670	674	676	679	681	680	680	676	671	669	671	675	677	678	678	675	670	667	666	662	657	657	648	650	649	652	659	667	675	680	684	683	680	667	658	649	649	649	649	649			
30	646	648	654	654	655	657	661	664	666	667	668	666	663	659	658	658	659	663	667	669	669	667	665	663	662	658	652	648	644	643	641	644	651	660	669	673	678	675	669	661	653	645	645	645	645				
31	648	652	652	650	651	651	655	659	661	663	661	659	656	652	650	650	653	657	661																														

80	354	386	408	427	443	457	455	447	446	453	468	472	463	455	454	462	472	470	456	441	426	425	452	443	368	288	216	150	180	201	220	240	260	280	298	321	351	372	391	402	415	432	447	
81	345	380	403	422	438	453	452	444	440	446	459	462	452	443	441	450	459	456	439	421	403	392	406	430	393	313	225	145	200	210	215	226	244	261	283	312	345	368	383	394	408	424	439	
82	339	376	398	420	436	450	447	437	432	439	448	450	440	430	429	439	448	442	426	407	383	365	359	397	392	330	237	147	217	202	198	205	220	240	268	302	338	361	373	385	398	412	427	
83	335	372	396	417	431	443	441	432	426	430	440	442	432	422	420	429	436	431	415	397	371	351	329	334	367	328	250	149	210	180	170	179	198	225	255	292	327	350	366	379	391	405	420	
84	331	368	393	413	425	437	435	424	418	422	431	434	424	413	411	420	427	423	406	388	367	346	318	303	321	315	263	158	191	148	144	160	183	214	247	285	320	345	360	373	385	401	416	
85	324	363	385	400	415	430	429	419	410	413	423	426	415	404	400	410	420	415	398	381	362	341	315	291	288	292	268	166	164	121	129	150	174	206	238	277	317	343	359	371	382	397	412	
86	316	354	375	391	407	422	421	409	398	401	412	415	405	395	392	401	410	405	390	373	354	333	310	284	272	275	259	166	138	110	119	142	169	201	234	272	313	337	352	364	376	390	405	
87	307	345	365	385	400	412	411	398	389	392	403	406	397	386	384	394	402	397	382	365	347	327	305	281	265	266	247	158	134	102	112	136	163	194	225	261	305	332	347	359	370	384	399	
88	297	332	355	372	386	399	400	390	381	385	396	400	390	380	377	388	398	393	376	360	344	325	304	281	265	257	233	154	132	95	106	130	157	188	219	255	298	324	339	351	363	376	391	
89	289	321	344	362	375	390	392	382	375	379	391	395	386	375	372	383	393	390	375	357	341	324	303	282	265	248	217	149	126	88	102	127	154	185	215	249	292	319	331	342	355	369	384	
90	279	310	333	351	366	381	384	375	367	372	385	389	381	368	365	377	387	386	371	356	341	324	305	285	266	237	206	146	123	85	104	130	156	186	214	247	289	317	333	341	353	367	382	
91	274	305	328	347	362	377	380	372	364	369	383	387	377	364	360	372	385	386	372	358	346	330	310	289	264	230	198	144	121	84	107	134	160	189	215	245	282	313	334	343	356	367	382	
92	272	303	327	347	362	379	382	373	365	370	382	387	378	365	360	373	387	386	374	362	351	335	314	290	261	226	192	144	119	82	110	137	164	192	218	245	277	306	331	344	358	368	383	
93	271	303	328	347	362	379	382	374	364	369	382	388	380	364	360	373	387	388	376	366	354	337	315	290	258	225	188	145	119	82	111	138	168	195	220	247	276	302	324	342	358	368	383	
94	271	304	329	349	364	380	383	374	365	370	385	392	382	367	363	375	389	390	379	368	356	337	314	288	257	225	189	146	119	82	113	139	171	197	221	248	276	301	319	340	358	368	383	
95	272	305	331	350	366	382	385	376	365	370	386	390	382	371	367	379	392	392	382	367	353	336	312	287	255	224	189	145	119	81	114	139	170	198	221	249	276	301	317	337	354	366	381	
96	272	305	331	350	366	382	384	373	362	368	383	388	382	370	364	378	389	391	379	362	348	331	309	282	251	222	190	147	119	80	113	136	165	195	220	247	272	297	313	332	348	359	374	
97	272	305	330	348	364	380	381	370	359	364	382	389	381	366	362	379	390	391	377	357	342	325	304	276	246	218	189	149	119	78	114	136	163	195	223	248	274	297	313	330	346	357	372	
98	273	305	329	348	364	380	381	370	357	360	377	390	378	366	364	379	392	392	375	356	341	324	304	276	247	219	191	153	120	81	118	139	164	195	223	251	276	298	313	330	345	355	370	
99	274	306	330	347	364	380	381	370	354	359	373	384	376	368	366	373	391	390	374	356	341	325	304	278	249	222	193	156	122	85	122	144	166	196	224	252	277	298	313	329	343	354	369	
100	275	306	329	346	363	379	378	368	353	361	372	380	376	368	360	367	388	388	374	356	342	327	304	279	251	225	196	160	125	88	127	148	169	196	226	254	279	298	314	329	342	353	368	
101	275	306	329	345	362	377	376	366	354	358	370	379	378	366	354	370	387	386	374	355	341	328	305	282	254	228	199	164	127	91	132	152	173	198	228	255	281	300	316	330	341	350	365	
102	276	306	328	345	361	375	377	366	354	352	367	377	371	361	357	372	385	385	374	356	342	328	307	284	257	230	202	167	128	95	137	156	177	199	230	257	282	301	316	331	341	349	364	
103	277	306	328	344	362	375	376	365	354	354	371	381	372	361	360	369	382	382	375	358	343	329	309	285	259	232	205	170	129	98	142	161	180	202	232	259	283	302	317	331	341	349	364	
104	279	306	328	343	362	375	375	364	353	358	375	384	378	363	356	365	378	382	375	358	344	329	310	287	261	235	207	173	130	102	146	166	185	205	233	261	284	303	318	331	342	349	364	
105	280	307	328	341	362	375	375	363	351	356	373	381	375	360	353	362	377	381	375	360	344	328	309	287	262	230	201	171	123	99	141	158	175	194	222	255	285	303	319	333	342	349	364	
106	280	307	328	341	361	374	374	362	349	353	369	377	371	357	350	358	377	368	361	332	298	269	249	226	203	183	152	120	81	66	99	113	120	129	150	176	265	279	304	333	344	349	364	
107	278	306	327	339	358	371	367	359	342	346	333	366	333	283	256	230	214	205	195	176	160	149	138	127	115	117	107	83	60	44	55	61	64	67	75	78	168	176	188	205	224	244	259	
108	170	179	195	177	167	153	131	108	53	37	45	41	21	23	25	28	23	26	27	35	33	29	31	34	39	37	35	29	25	25	22	21	20	14	14	17	48	52	46	50	39	47		
109	22	17	17	12	7	5	5	3	4	1	2	1	2	2	3	4	6	8	13	14	14	16	19	21	24	24	24	21	18	17	14	12	9	6	6	5	7	5	3	2	1	1		
110	3	3	3	2	1	0	0	0	0	0	0	0	0	0	0	0	0	1	2	4	6	8	10	12	15	16	16	14	12	10	7	5	3	1	1	0	0	0	0	0	0	0		
111	0	0	0	0	0	0	0	0	0	0	0	0	0	0	0	0	0	0	0	0	0	0	1	2	4	6	7	7	6	5	3	1	0	0	0	0	0	0	0	0	0	0	0	0
112	0	0	0	0	0	0	0	0	0	0	0	0	0	0	0	0	0	0	0	0	0	0	0	0	0	0	1	1	0	0	0	0	0	0	0	0	0	0	0	0	0	0	0	0
113	0	0	0	0	0	0	0	0	0	0	0	0	0	0	0	0	0	0	0	0	0	0	0	0	0	0	0	0	0	0	0	0	0	0	0	0	0	0	0	0	0	0	0	0
114	0	0	0	0	0	0	0	0	0	0	0	0	0	0	0	0	0	0	0	0	0	0	0	0	0	0	0	0	0	0	0	0	0	0	0	0	0	0	0	0	0	0	0	0
115	0	0	0	0	0	0	0	0	0	0	0	0	0	0	0	0	0	0	0	0	0	0	0	0	0	0	0	0	0	0	0	0	0	0	0	0	0	0	0	0	0	0	0	0
116	0	0	0	0	0	0	0	0	0	0	0	0	0	0	0	0	0	0	0	0	0	0	0	0	0	0	0	0	0	0	0	0	0	0										

[illegible]

Luminaire Report Summary

IESNA:LM-63-2002
[LUMCAT] CTR180916-09
[LUMINAIRE] SC12 - 12" Shallow Classic Shade
[LAMP] 200W A21
[TEST] LM-79 Distribution
[TESTLAB] Kichler Lighting LLC
[ISSUEDATE] 12/18/2019
[MANUFAC] Kichler Lighting LLC
FILE: CANDELA MULTIPLIER: 1
FILE: VERTICAL ANGLES: 181, HORIZONTAL ANGLES: 73
FILE: COORDINATE SYSTEM: TYPE C
FILE: UNIT OF MEASURE: STANDARD
FILE: BALLAST FACTOR: 1

Photometrics Pro 1.3.29 copyright 2003-2020 by jSolutions, Inc.
Reported data calculated from manufacturer's data file, based on IES recommended methods.